

Flygt 3127.161/.191

Table of Contents

1 Introduction.....	2
1.1 Specially approved products.....	2
2 Product Description.....	3
2.1 The data plate.....	3
2.2 Approvals.....	4
2.3 Product denomination.....	5
3 Exploded View.....	7
3.1 Drive Unit.....	7
3.1.1 Standard and explosion-proof.....	7
3.2 Hydraulic Unit.....	8
3.2.1 N_ LT.....	8
3.2.2 N_ LT.....	9
3.2.3 N_ MT.....	10
3.2.4 N_ HT.....	11
3.2.5 N_ SH.....	12
3.3 Installation Components.....	13
3.3.1 CP/FP/NP.....	13
3.3.2 CS/FS/NS.....	14
3.3.3 CT/FT/NT.....	15
3.3.4 CZ/FZ/NZ.....	16
3.3.5 LL/NL.....	17
4 List of Parts.....	18
4.1 3127.161/.191.....	18

1 Introduction

Purpose of this manual

The purpose of this manual is to provide necessary information on spare parts and accessories order.

Disclaimer

Always use genuine Flygt parts. The use of other spare parts or accessories can invalidate any claims for warranty or compensation. Xylem does not take any responsibility for damages that are caused by the use of non-original parts. For more information, contact your local sales and service representative.

Data for ordering spare parts

The following information is needed for spare part orders:

- Serial number of the product
- Part number
- Quantity of bulk material, see * in tables

1.1 Specially approved products

Qualification of personnel

Only Xylem or Xylem-authorized service personnel may undertake repair work on specially approved products.

Dimensional accuracy inspection

Spare parts marked with (Ex) after the part number are subject to dimensional accuracy inspection when used in specially approved products.

2 Product Description

Products included

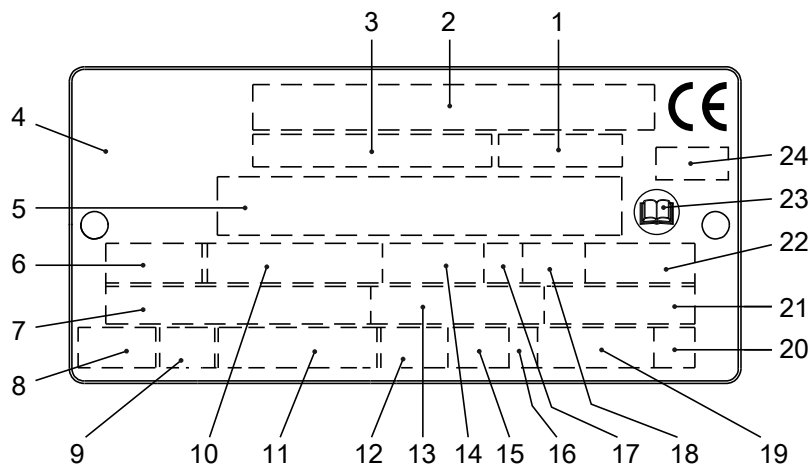
Pump	Non-explosion proof drive unit	Explosion proof drive unit	High Efficiency motor (LSPM)	C-hydraulic	D-hydraulic	F-hydraulic	H hydraulic	L hydraulic	P hydraulic	M-hydraulic (Grinder)	Chopper hydraulics	N hydraulic (Hard-Iron™)	Adaptive N™ hydraulic
3127.161	X												X ³
3127.191		X											X ³
¹ Hard-Iron™ ² Stainless steel ³ Cast iron, gray													

Pump-specific information

For the specific weight, current, voltage, power ratings, and speed of the pump, see the data plate of the pump.

2.1 The data plate

The data plate is a metal label that is located on the main body of the products. The data plate lists key product specifications. Specially approved products also have an approval plate.



1. Curve code or Propeller code
2. Serial number
3. Product number
4. Country of origin
5. Additional information
6. Phase; type of current; frequency
7. Rated voltage
8. Thermal protection
9. Thermal class
10. Rated shaft power
11. International standard
12. Degree of protection
13. Rated current
14. Rated speed
15. Maximum submergence
16. Direction of rotation: L=left, R=right
17. Duty class
18. Duty factor


WS006257A

- 19. Product weight
- 20. Locked rotor code letter
- 21. Power factor
- 22. Maximum ambient temperature
- 23. Read installation manual
- 24. Notified body, only for EN-approved Ex products

Figure 1: The data plate

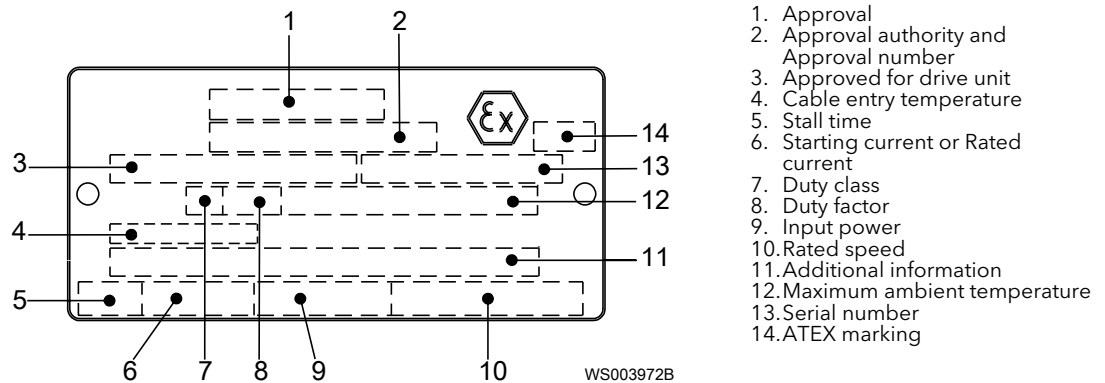
2.2 Approvals

Product approvals for hazardous locations

Pump	Approval
<ul style="list-style-type: none"> • 3127.191 	European Norm (EN) <ul style="list-style-type: none"> • ATEX Directive • EN 60079-0:2012/A11:2013, EN 60079-1:2007, EN 13463-1:2009, EN 13463-5:2011 •  II 2 G c Ex d IIB T4 Gb
	IEC <ul style="list-style-type: none"> • IECEx scheme • IEC 60079-0, IEC 60079-1 • Ex d IIB T4 Gb
	FM (FM Approvals) <ul style="list-style-type: none"> • Explosion proof for use in Class I, Div. 1, Group C and D • Dust ignition proof for use in Class II, Div. 1, Group E, F and G • Suitable for use in Class III, Div. 1, Hazardous Locations
	CSA Ex <ul style="list-style-type: none"> • Explosion proof for use in Class I, Div. 1, Group C and D

EN approval plate

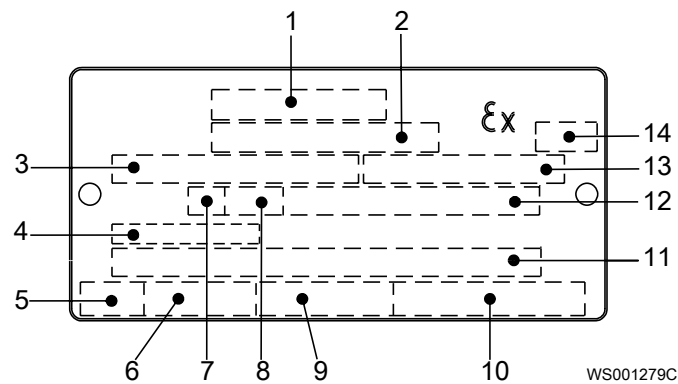
This illustration describes the EN approval plate and the information that is contained in its fields.



IEC approval plate

This illustration describes the IEC approval plate and the information that is contained in its fields.

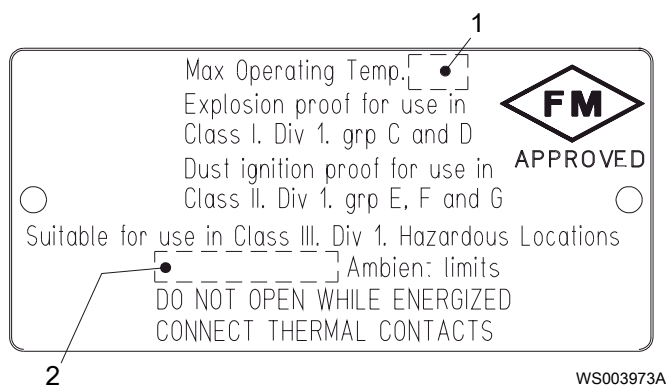
International Norm; not for EU member countries.



1. Approval
2. Approval authority and Approval number
3. Approved for drive unit
4. Cable entry temperature
5. Stall time
6. Starting current or Rated current
7. Duty class
8. Duty factor
9. Input power
10. Rated speed
11. Additional information
12. Maximum ambient temperature
13. Serial number
14. ATEX marking

FM approval plate

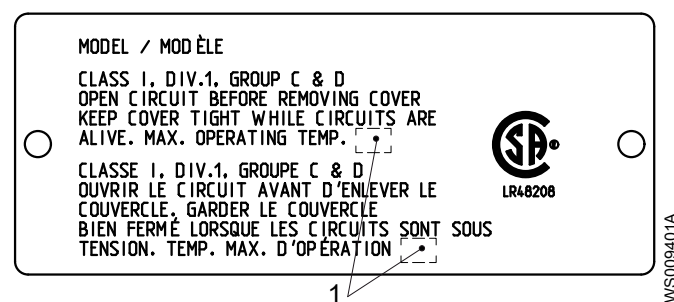
This illustration describes the FM approval plate and the information that is contained in its fields.



1. Temperature class
2. Maximum ambient temperature

CSA approval plate

This illustration describes the CSA approval plate and the information that is contained in its fields.



1. Temperature class

2.3 Product denomination

Reading instruction

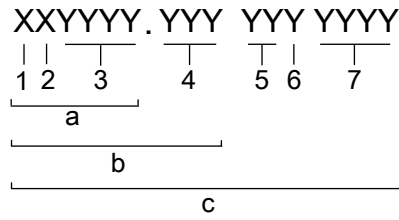
In this section, code characters are illustrated accordingly:

X = letter

Y = digit

The different types of codes are marked up with a, b and c. Code parameters are marked up with numbers.

Codes and parameters



WS006265B

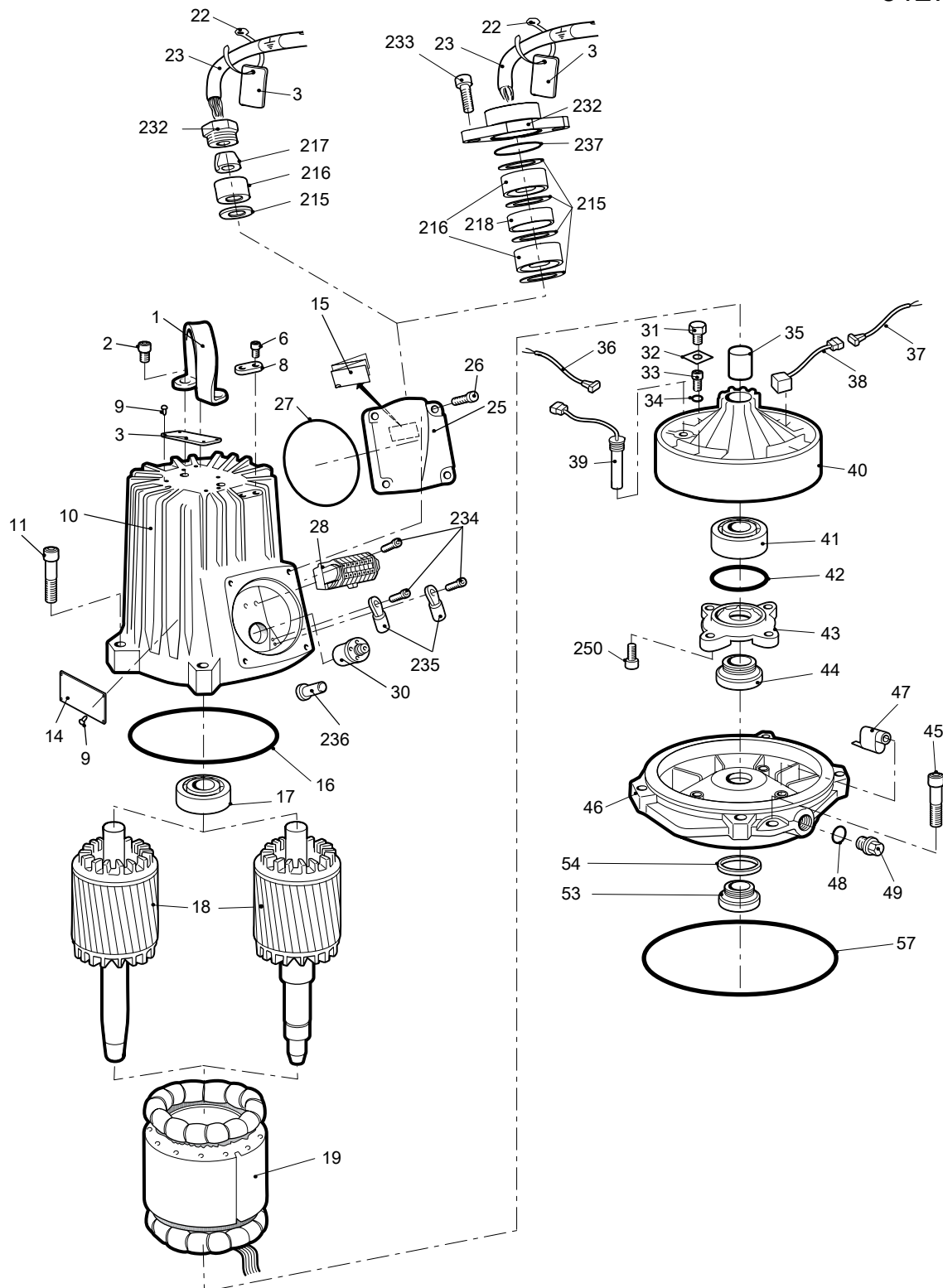
Type of Callout	Number	Indication
Type of code	a	Sales denomination
	b	Product code
	c	Serial number
Parameter	1	Hydraulic end
	2	Type of installation
	3	Sales code
	4	Version
	5	Production year
	6	Production cycle
	7	Running number

3 Exploded View

3.1 Drive Unit

3.1.1 Standard and explosion-proof

3127



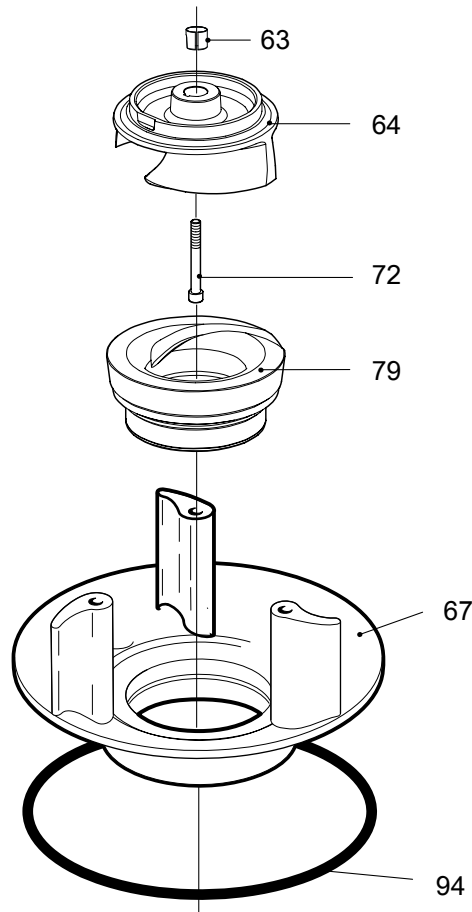
31582C

3.2 Hydraulic Unit

3.2.1 N_LT

LL, Curve: 420 – 422

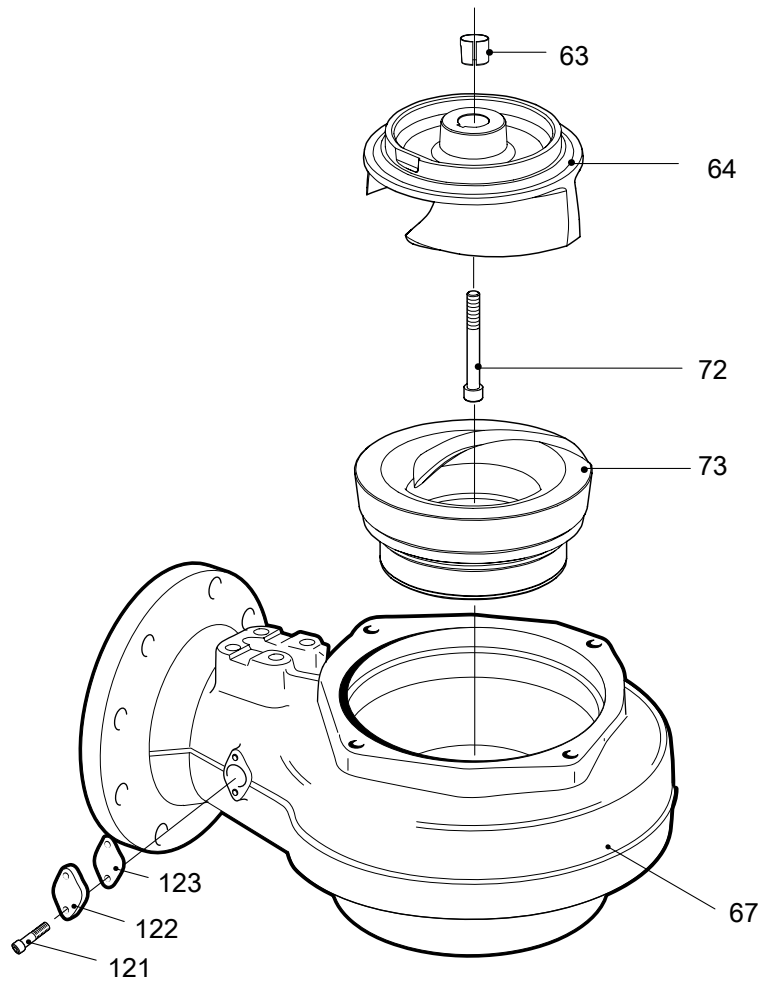
NL 3127 LT



30490B

3.2.2 N_LT

Pump housing,
N_3127 LT

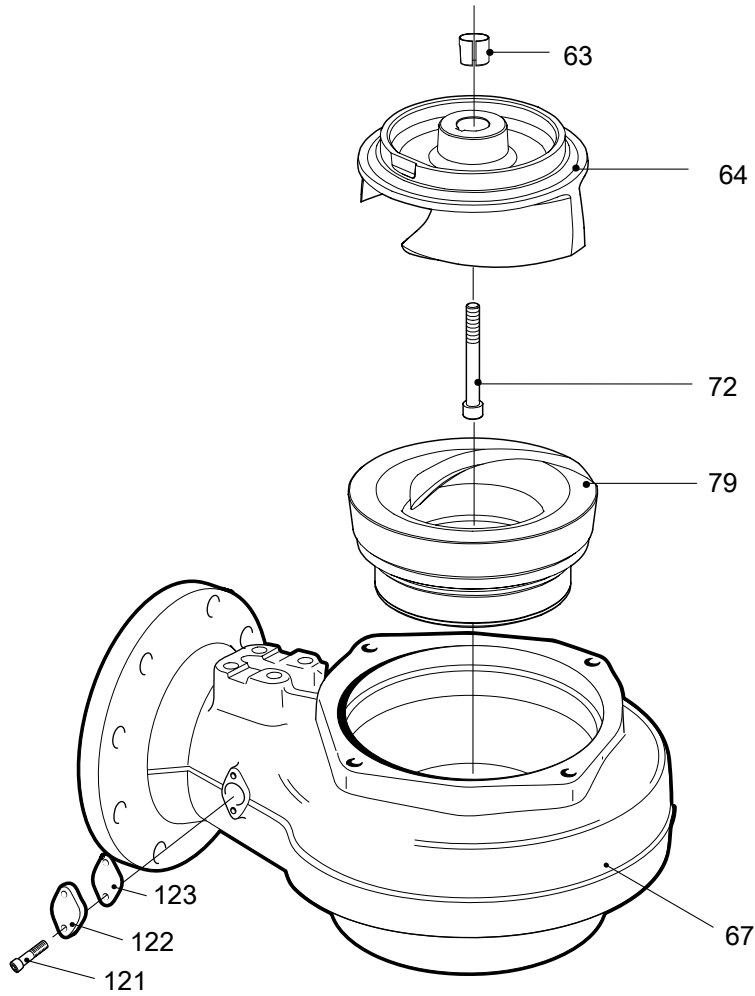


30491C

3.2.3 N_MT

Curve: 437 – 439

N_ 3127 MT

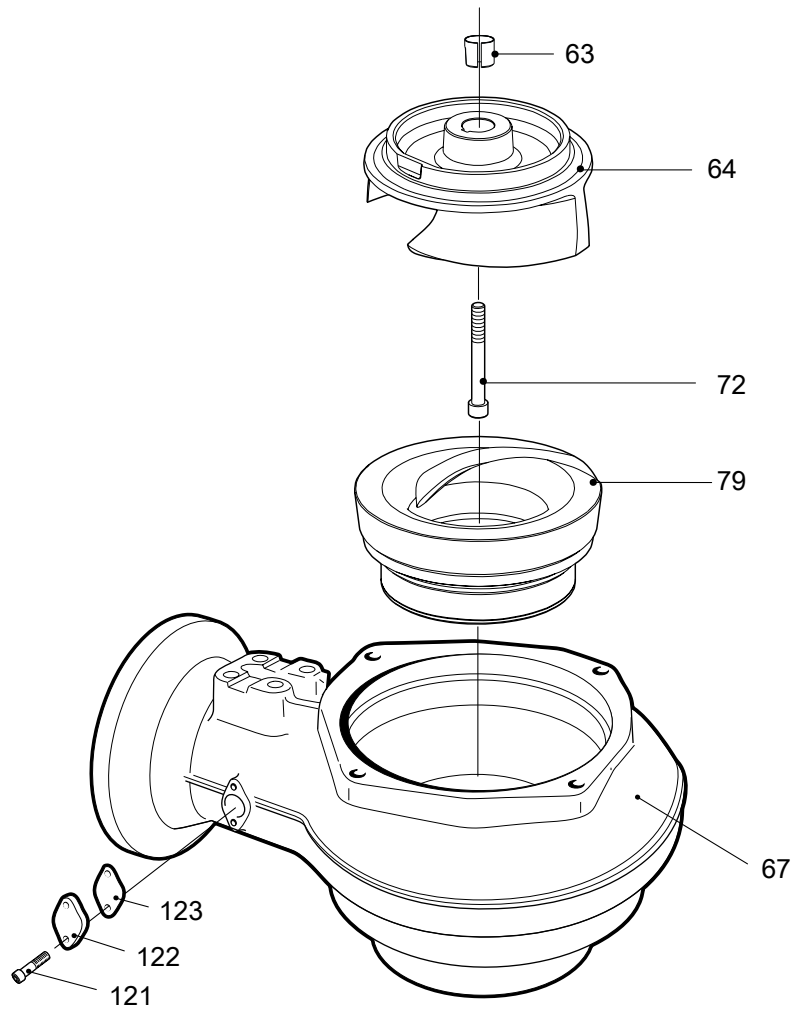


30564C

3.2.4 N_HT

Curve: 486 – 489

N_3127 HT

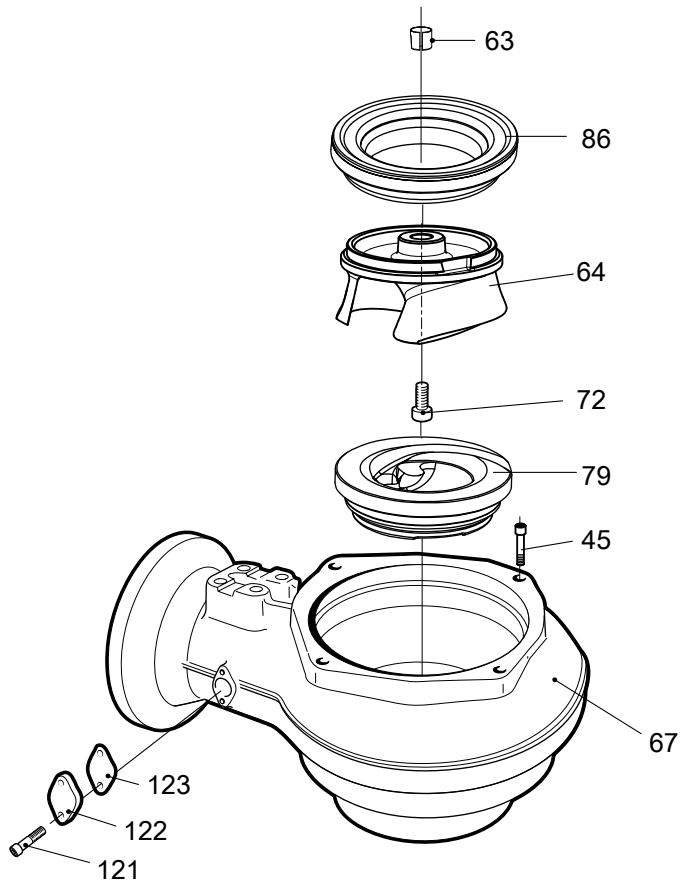


30931B

3.2.5 N_SH

Curve: 245 – 249

N_3127 SH

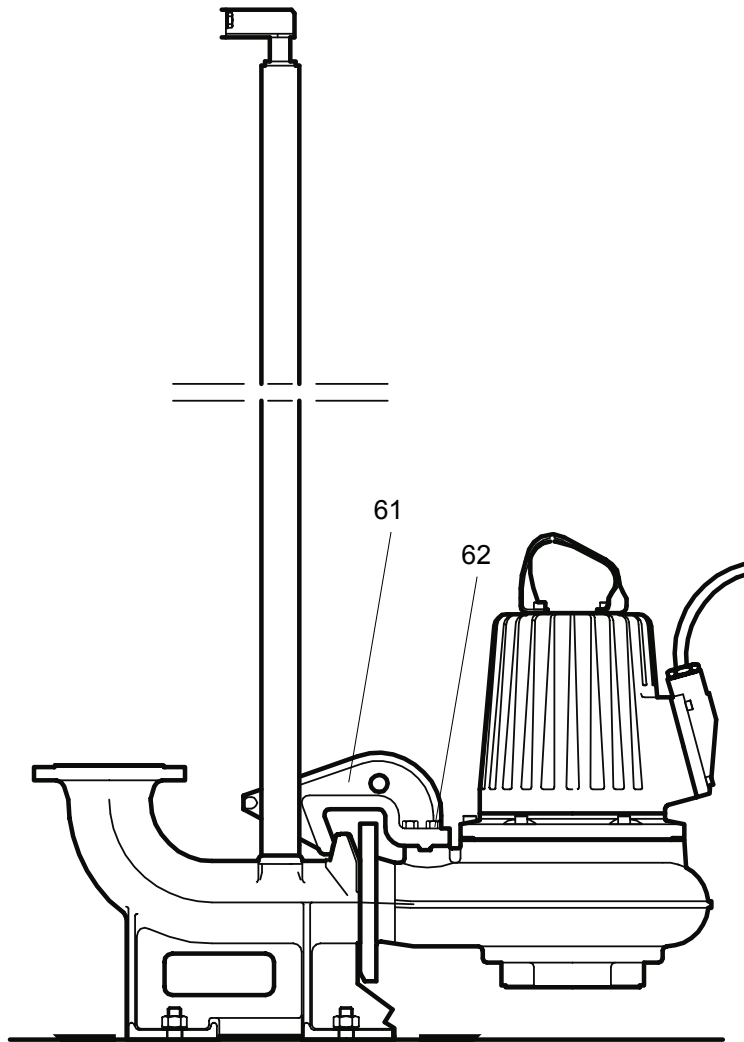


31400A

3.3 Installation Components

3.3.1 CP/FP/NP

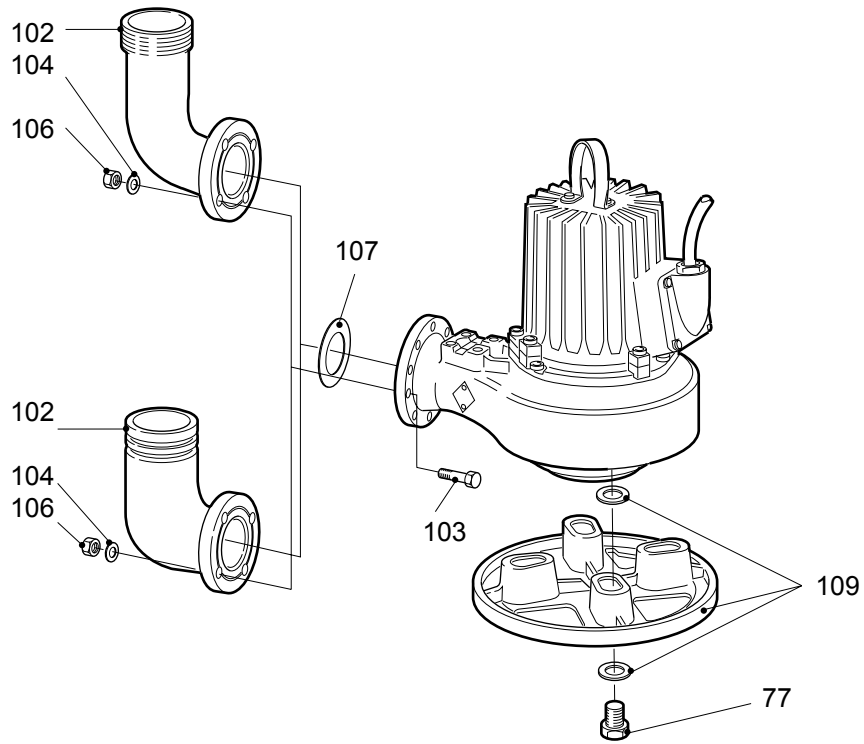
CP/FP/NP 3127



30741

3.3.2 CS/FS/NS

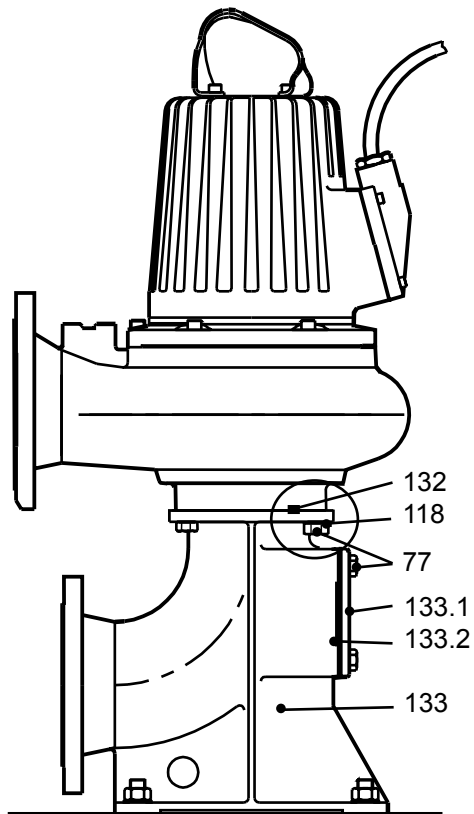
CS/DS/FS/NS 3127



30253B

3.3.3 CT/FT/NT

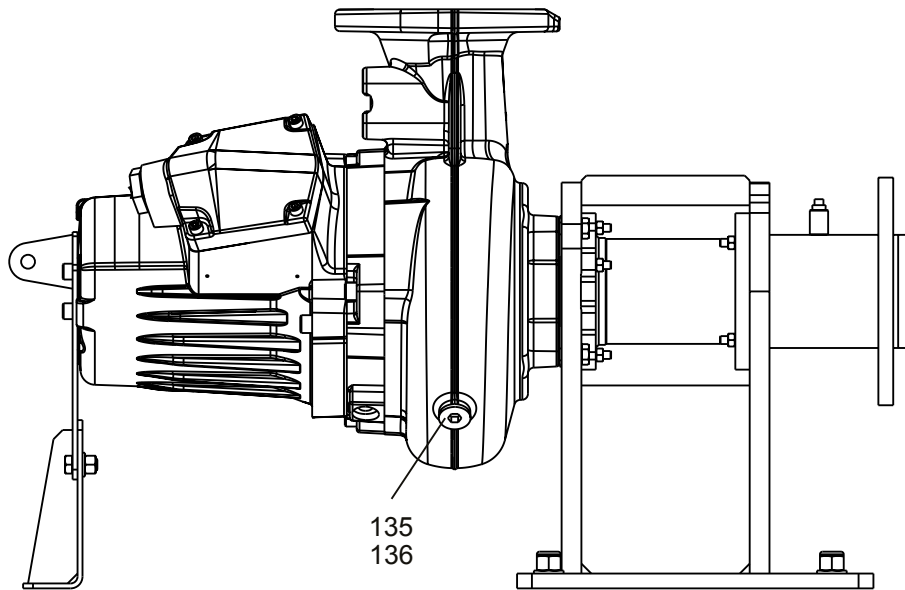
CT/FT/NT 3127



30742

3.3.4 CZ/FZ/NZ

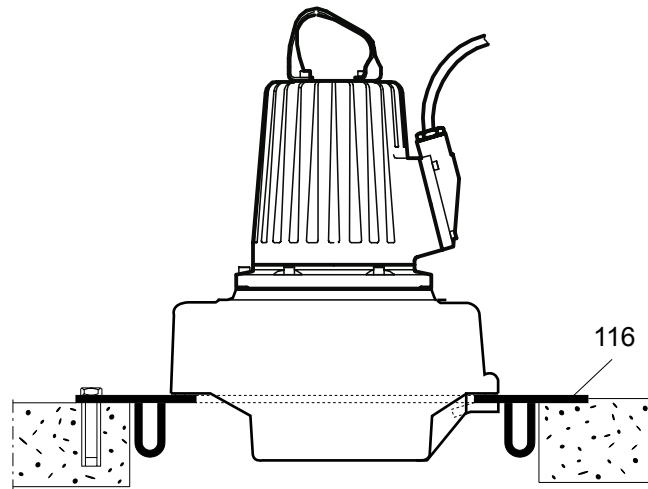
CZ/FZ/NZ 3127



31500

3.3.5 LL/NL

LL/NL 3127



30275A

4 List of Parts

4.1 3127.161/.191

Pos. No	Part. No	Type	Denomination	Qty/Version	
				161	191
1	477 11 01		Lifting handle	1	1
2	83 03 23		Hex.socket hd screw M10X25-A4-70	2	2
3	630 68 00		Data plate USE 6306801 AS SPARE PART	2	2
6	83 02 58		Hex.socket hd screw M5X12-A4-70		2
8	279 29 00		Earthing plate		1
9	82 20 88		Drive screw 4X5-A2/A4	6	10
9	82 20 88		Drive screw 4X5-A2/A4	2	
10	443 53 00		Stator housing	1	
10	443 53 05	(Ex)	Stator housing		1
11	83 03 30		Hex.socket hd screw M10X60-A4-70	4	4
13	630 76 00		Plate HOT WATER PRODUCT	1	
14	630 69 00		Certificate plate EN		2
14	630 69 01	(Ex)	Certificate plate IECEX		2
14	630 70 00		Certificate plate FM		2
14	801 03 00		Name plate		1
15	772 17 00		Connection plate	1	1
16	82 74 97		O-ring 239.5X5.7 NBR	1	
16	82 80 86		O-ring 239.3X5.7 FPM	1	
16	82 74 97		O-ring 239.5X5.7 NBR		1
17	83 32 36		Ball bearing 6207,35X72X17	1	1
18	791 37 01		Shaft unit	1	
18	791 37 00		Shaft unit	1	
18	443 59 05		Shaft unit	1	
18	801 35 00		Shaft unit	1	
18	798 93 01	(Ex)	Shaft unit		1
18	798 93 00	(Ex)	Shaft unit		1
18	798 92 00	(Ex)	Shaft unit		1
19	426 63 02		Stator 21-10-4a	1	1
19	426 63 01		Stator 21-10-4a	1	1
19	426 63 12		Stator 21-10-4a	1	1
19	426 63 28		Stator 21-10-4a	1	1

Pos. No	Part. No	Type	Denomination	Qty/Version	
				161	191
19	426 63 34		Stator 21-10-4a 50 Hz 4-poles 220V D 380V Y P2=4,70kW 60 Hz 4-poles 260V D 440V-460V Y P2=5,60kW/7,50hp	1	1
19	426 63 38		Stator 21-10-4a 50 Hz 4-poles 380V D 660V Y P2=4,70kW 60 Hz 4-poles 440V-460V D P2=5,60kW/7,50hp	1	1
19	426 63 40		Stator 21-10-4a 50 Hz 4-poles 400V D P2=4,70kW 60 Hz 4-poles 400V D P2=5,60kW/ 7,50hp	1	1
19	426 63 44		Stator 21-10-4a 50 Hz 4-poles 400V-440V D P2=4,70kW 60 Hz 4-poles 480V D P2=5,60kW/ 7,50hp	1	1
19	426 63 52		Stator 21-10-4a 50 Hz 4-poles 500V D P2=4,70kW 60 Hz 4-poles 600V D P2=5,60kW/ 7,50hp	1	1
19	309 44 12		Stator 21-12-4a 60 Hz 4-poles 220V-230V Y// 440V-460V YSER P1=6,90KW 60 Hz 4-poles 220V-230V Y// 440V-460V YSER P2=7,50kW/10hp 1-phase 60 Hz 4-poles 220V-240V P2=5,60kW/7,50hp	1	1
19	309 44 28		Stator 21-12-4a 50 Hz 4-poles 190V-200V D P2=5,90kW 60 Hz 4-poles 200V-208V D P1=6,80KW 50 Hz 4-poles 190V-200V D Max P1=6,20KW 60 Hz 4-poles 200V-208V D P2=7,50kW/10hp	1	1
19	309 44 29		Stator 21-12-4a 60 Hz 4-poles 220V-230V D 380V Y P1=6,80KW 60 Hz 4-poles 220V-230V D 380V Y P2=7,50kW/10hp	1	1
19	309 44 30		Stator 21-12-4a 60 Hz 4-poles 380V D 660V Y P1=6,70KW 60 Hz 4-poles 380V D 660V Y P2=7,50kW/10hp	1	1
19	309 44 34		Stator 21-12-4a 50 Hz 4-poles 230V D 400V Y P2=7,50kW 50 Hz 4-poles 220V-230V D 380V-400V Y P2=5,90kW 60 Hz 4-poles 260V D 440V-460V Y P1=6,80KW 50 Hz 4-poles 220V-230V D 380V-400V Y Max P1=6,20KW 60 Hz 4-poles 260V D 440V-460V Y P2=7,50kW/10hp	1	1

Pos. No	Part. No	Type	Denomination	Qty/Version		
				161	191	
19	309 44 38		Stator 21-12-4a	50 Hz 4-poles 380V-415V D 690V Y P2=7,50kW 50 Hz 4-poles 380V-400V D 660V-690V Y P2=5,90kW 60 Hz 4-poles 440V-460V D P1=6,90KW 50 Hz 4-poles 380V-400V D 660V-690V Y Max P1=6,30KW 60 Hz 4-poles 440V-460V D P2=7,50kW/10hp	1	1
19	309 44 40		Stator 21-12-4a	60 Hz 4-poles 400V D P1=6,90KW 60 Hz 4-poles 400V D P2=7,50kW/ 10hp	1	1
19	309 44 44		Stator 21-12-4a	50 Hz 4-poles 415V-440V D P2=5,90kW 50 Hz 4-poles 415V-440V D P1=6,20KW	1	1
19	309 44 52		Stator 21-12-4a	50 Hz 4-poles 500V D P2=5,90kW 60 Hz 4-poles 575V-600V D P1=6,80KW 60 Hz 4-poles 575V-600V D P2=7,50kW/10hp	1	1
19	309 49 12		Stator 21-11-2a	60 Hz 2-poles 220V-230V Y// 440V-460V YSER P2=8,20kW/11hp	1	1
19	309 49 28		Stator 21-11-2a	50 Hz 2-poles 190V-200V D P2=7,40kW 60 Hz 2-poles 200V-220V D P2=8,20kW/11hp	1	1
19	309 49 29		Stator 21-11-2a	60 Hz 2-poles 220V-230V D 380V Y P2=8,20kW/11hp	1	1
19	309 49 30		Stator 21-11-2a	60 Hz 2-poles 380V D 660V Y P2=8,20kW/11hp	1	1
19	309 49 34		Stator 21-11-2a	50 Hz 2-poles 220V D 380V Y P2=7,40kW 60 Hz 2-poles 260V D 440V-460V Y P2=8,20kW/11hp	1	1
19	309 49 38		Stator 21-11-2a	50 Hz 2-poles 380V D 660V Y P2=7,40kW 60 Hz 2-poles 440V-460V D P2=8,20kW/11hp	1	1
19	309 49 40		Stator 21-11-2a	60 Hz 2-poles 400V D P2=8,20kW/ 11hp	1	1
19	309 49 44		Stator 21-11-2a	50 Hz 2-poles 400V-440V D P2=7,40kW 60 Hz 2-poles 480V D P2=8,20kW/ 11hp	1	1
19	309 49 52		Stator 21-11-2a	50 Hz 2-poles 500V D P2=7,40kW 60 Hz 2-poles 575V-600V D P2=8,20kW/11hp	1	1
19	309 49 01		Stator 21-11-2a	50 Hz 2-poles 230V D 400V Y P2=7,40kW	1	1

Pos. No	Part. No	Type	Denomination	Qty/Version	
				161	191
19	309 49 02		Stator 21-11-2a 50 Hz 2-poles 400V D 690V Y P2=7,40kW	1	1
22	83 45 59		Cable tie 200X2.4 PA 6/6 -55+105	1	1
23	94 20 42		Motor cable subcab 4G2.5	*	*
23	94 20 43		Motor cable subcab 4G4	*	*
23	94 20 59		Motor cable subcab 4G2.5+2X1.5	*	*
23	94 20 60		Motor cable subcab 4G4+2X1.5	*	*
23	94 20 82		Motor cable subcab 7G2.5+2X1.5	*	*
23	94 20 80		Motor cable subcab 7G4+2X1.5	*	*
23	94 20 56		Motor cable subcab 4G6+2X1.5	*	*
23	94 19 81		Motor cable subcab 4G10+S(2X0.5)	*	*
23	94 17 23		Motor cable 3X2,5MM	*	*
23	94 19 90		Motor cable subcab S3X2.5+3X2.5/3+S(4X0.5)	*	*
23	94 17 24		Motor cable SCREENED 6X2,5+2*1,5	*	*
25	443 51 00		Entrance cover	1	1
25	443 50 00		Entrance cover	1	1
25	443 50 03	(Ex)	Entrance cover		1
26	83 04 45		Hex.socket hd screw M8X35-A4-80	4	4
27	82 74 78		O-ring 124.5X3.0-NBR	1	
27	82 95 60		O-ring 123X3 FPM	1	
27	82 74 78		O-ring 124.5X3.0-NBR		1
30	734 59 00		El.lead through unit 12X + 6X	1	
30	734 59 00		El.lead through unit 12X + 6X Sealed stator housing Leakage detector in the stator house: FLS SmartRun possible Sealed stator housing		1
31	439 44 01	(Ex)	Screw M14X1.25		3
32	596 07 00		Square washer		3
33	82 17 64		Cutting screw TAPTITE-M6X20	3	3
34	82 50 60		Sealing washer DUBO NR 301	3	3
35	443 57 02		Sleeve SIS 14 41 04-6	1	
35	443 57 00		Sleeve SIS 14 41 04-6	1	
35	443 57 01		Sleeve SIS 14 41 04-6	1	
36	504 78 06		Cable unit	1	
37	504 78 07		Cable unit	1	1
38	518 89 02		Leakage sensor (FLS)	1	1
39	505 12 00		Leakage sensor (CLS30)	1	
40	800 27 00		Bearing holder	1	
40	800 27 02		Bearing holder	1	
40	443 55 11	(Ex)	Bearing holder EX.VERSION		1
41	83 30 17		Ball bearing 35X80X34.9 MM	1	1
42	82 78 15		O-ring 78X4 NBR	1	
42	82 79 18		O-ring 78X4 FPM	1	

Pos. No	Part. No	Type	Denomination	Qty/Version	
				161	191
42	82 78 15		O-ring 78X4 NBR		1
43	614 49 00		Bearing cover	1	1
44	720 63 31		Mechanical seal AL203/WCCR FPM	1	
44	720 63 30		Mechanical seal WCCR/WCCR FPM	1	
44	720 63 31		Mechanical seal AL203/WCCR FPM		1
44	720 63 30		Mechanical seal WCCR/WCCR FPM		1
45	83 03 48		Hex.socket hd screw M12X40-A4-70	5	5
46	761 16 00		Oil housing bottom MECH. SEAL 720 63 XX	1	
46	761 16 01		Oil housing bottom MECH. SEAL 549 07 XX	1	
46	761 16 00		Oil housing bottom MECH. SEAL 720 63 XX		1
47	443 49 00		Sleeve	1	1
48	82 73 90		O-ring 19.2X3 NBR	2	
48	82 72 95		O-ring 19.2X3 FPM	2	
48	82 73 90		O-ring 19.2X3 NBR		2
49	428 22 17		Inspection screw BRASS	2	2
53	720 63 00		Mechanical seal WCCR/WCCR FPM, NBR	1	1
53	720 63 02		Mechanical seal RSIC/RSIC FPM	1	1
53	549 07 01		Mechanical seal WCCR/WCCR FPM	1	
54	591 79 00		Insert ring	1	
57	82 74 98		O-ring 249.3X5.7 NBR	1	1
59	436 10 00		Ring		1
61	380 91 00		Sliding bracket	1	1
62	83 04 53		Hex.socket hd screw M12X45-A4-80	4	4
63	798 81 00		Sleeve unit	1	1
64	798 69 03		Impeller unit	1	1
64	798 69 19		Impeller unit	1	1
64	798 69 41		Impeller unit	1	1
64	798 63 00		Impeller unit	1	1
64	798 63 18		Impeller unit	1	1
64	798 63 32		Impeller unit	1	1
64	798 51 00		Impeller unit	1	1
64	798 51 07		Impeller unit	1	1
64	798 51 16		Impeller unit	1	1
64	798 51 25		Impeller unit	1	1
64	798 51 34		Impeller unit	1	1

Pos. No	Part. No	Type	Denomination	Qty/Version		
				161	191	
64	798 57 03		Impeller unit	HT 50Hz Curve code: 486	1	1
64	798 57 23		Impeller unit	HT 50Hz Curve code: 487	1	1
64	798 57 43		Impeller unit	HT 60Hz Curve code: 487 HT 50Hz Curve code: 488 HT 60Hz Curve code: 488	1	1
64	798 57 63		Impeller unit	HT 50Hz Curve code: 489 HT 60Hz Curve code: 489	1	1
67	309 27 22		Pump housing	LT N DN 150 Installation: P	1	1
67	465 14 22		Pump housing	HT N DN 100 Installation: P	1	1
67	309 25 20		Pump housing	MT N DN 150 Installation: P	1	1
67	426 44 20		Pump housing	MT N DN 100 Installation: P	1	1
67	309 26 30		Pump housing	SH N DN 80 Installation: P	1	1
67	309 27 26		Pump housing	LT N DN 150 Drilled acc. to: EN 1092-2 tab. 9 ANSI B16.1-89; tab.5 Installation: P S T X	1	1
67	309 25 26		Pump housing	MT N DN 150 Drilled acc. to: EN 1092-2 tab. 9 ANSI B16.1-89; tab.5 Installation: P S T X	1	1
67	426 44 22		Pump housing	MT N DN 100 Drilled acc. to: EN 1092-2 tab. 9 Installation: P T S X	1	1
67	426 44 21		Pump housing	MT N DN 100 Drilled acc. to: ANSI B16.1-89; tab.5 Installation: P T X	1	1
67	465 14 24		Pump housing	HT N DN 100 Drilled acc. to: EN 1092-2 tab. 9 Installation: P S T X	1	1
67	465 14 05		Pump housing	HT N DN 100 Drilled acc. to: ANSI B16.1-89; tab.5 Installation: P T X	1	1
67	309 26 61		Pump housing	SH N DN 80 Drilled acc. to: EN 1092-2 tab. 9 Installation: P S T X	1	1
67	309 26 05		Pump housing	SH N DN 80 Drilled acc. to: ANSI B16.1-89; tab.5 Installation: P T S X	1	1
67	309 27 36		Pump housing	LT N DN 150 Drilled acc. to: EN 1092-2 tab. 9 ANSI B16.1-89; tab.5 Installation: Z Drainage plug	1	1
67	309 25 36		Pump housing	MT N DN 150 Drilled acc. to: EN 1092-2 tab. 9 ANSI B16.1-89; tab.5 Installation: Z Drainage plug	1	1
67	426 44 31		Pump housing	MT N DN 100 Drilled acc. to: EN 1092-2 tab. 9 Installation: Z Drainage plug	1	1
67	426 44 35		Pump housing	MT N DN 100 Drilled acc. to: ANSI B16.1-89; tab.5 Installation: Z Drainage plug	1	1
67	465 14 31		Pump housing	HT N DN 100 Drilled acc. to: EN 1092-2 tab. 9 Installation: Z Drainage plug	1	1
67	465 14 35		Pump housing	HT N DN 100 Drilled acc. to: ANSI B16.1-89; tab.5 Installation: Z Drainage plug	1	1
67	309 26 81		Pump housing	SH N DN 80 Drilled acc. to: EN 1092-2 tab. 9 Installation: Z Drainage plug	1	1

Pos. No	Part. No	Type	Denomination	Qty/Version		
				161	191	
67	309 26 85		Pump housing	SH N DN 80 Drilled acc. to: ANSI B16.1-89; tab.5 Installation: Z Drainage plug	1	1
67	396 73 00		Diffuser coat.	LT N Column pipe DN 600 Installation: L	1	1
72	83 02 67		Hex.socket hd screw M12X70-A4-70		1	1
77	81 41 81		Hexagon head screw M16X40-A4-70		4	4
77	81 49 12		Hexagon head screw M12X35-A4-70		4	4
79	766 54 00		Insert ring	LT 50Hz LT 60Hz	1	1
79	680 34 00		Insert ring	MT 50Hz MT 60Hz	1	1
79	725 40 00		Insert ring	SH 50Hz SH 60Hz	1	1
79	682 49 00		Insert ring	HT 50Hz HT 60Hz	1	1
86	769 79 00		Insert ring		1	1
87	80 97 40		Stud 12X35-A4-70		2	2
94	82 83 41		G-ring		1	1
97	84 34 38		Hexagon head screw M20X120-A2-70		4	4
98	82 35 26		Plain washer 21X37X3-A2-170HV		4	4
99	82 23 62		Hexagon nut M20-A2-70		4	4
102	309 80 00		Discharge connection 8"	LT DN 200	1	1
102	259 82 04		Discharge connection DN100	HT DN 100 SH DN 100	1	1
102	259 84 05		Discharge connection 4-8 NPSM	MT Thread: 4-8 NPSM Outer DN 100 HT Thread: 4-8 NPSM Outer DN 100	1	1
102	259 84 06		Discharge connection ISO G4"	HT Thread: ISO G4A Outer DN 100 MT Thread: ISO G4A Outer DN 100	1	1
102	295 57 00		Discharge connection DN150	MT LT DN 150	1	1
102	309 31 00		Discharge connection DN150	MT LT Thread: 6-8 NPSM Outer DN 150	1	1
102	385 52 04		Discharge connection ISO G3"	SH Thread: ISO G3 Outer DN 75 Quick coupling: Storz	1	1
102	309 31 01		Discharge connection DN150	MT Thread: ISO G6A Outer Quick coupling: Storz DN 150	1	1
102	340 88 00		Discharge connection 4"	HT DN 100	1	1
102	340 89 00		Discharge connection 4-8 NPSM	HT Thread: 4-8 NPSM OuterDN 100	1	1
102	310 03 01		Discharge connection DN80	HT DN 75	1	1
102	385 52 03		Discharge connection 3-8 NPSM	SH Thread: 3-8 NPSM Outer DN 75	1	1
103	81 49 60		Hexagon head screw M20X70-A4-70	MT LT	8	8
103	81 49 35		Hexagon head screw M16X60-A4-70	MT HT SH	4	4
103	81 49 36		Hexagon head screw M16X65-A4-70	HT SH	4	4

Pos. No	Part. No	Type	Denomination	Qty/Version		
				161	191	
103	84 34 32		Hexagon head screw M20X70-A2-70	Optional	2	
104	82 35 78		Plain washer 17X30X3-A4-170HV	MT	4	4
				HT		
				SH		
104	82 38 00		Plain washer 13X24X4-A4-170HV	HT	8	8
				SH		
106	82 23 38		Hexagon nut M20-A4-70	MT LT	8	8
106	82 23 37		Hexagon nut M16-A4-70	MT	4	4
				HT		
				SH		
106	82 23 35		Hexagon nut M12-A4-70	HT	2	2
107	295 64 00		Gasket 6"	MT LT	1	1
107	259 83 00		Gasket 4"	MT	1	1
				HT		
				SH		
107	310 05 00		Gasket 3"	HT	1	1
				SH		
107	339 87 00		Gasket	HT	1	1
109	436 94 01		Stand unit	MT	1	1
				LT		
				SH		
109	436 94 00		Stand unit	HT	1	1
				SH		
111	83 18 46		Coupling part	SH Thread: ISO G3 Outer DN 75 Quick coupling: Storz	1	1
111	83 19 36		Coupling part	MT Thread: ISO G6A Outer Quick coupling: Storz DN 150	1	1
111	83 18 28		Coupling part	Optional	1	
116	416 13 01		Plate 393X8		1	1
118	82 35 78		Plain washer 17X30X3-A4-170HV	LT	4	4
				MT		
118	82 35 77		Plain washer 13X24X2.5-A4-170HV	HT SH	4	4
121	83 03 23		Hex.socket hd screw M10X25-A4-70		2	2
122	433 56 00		Cover		1	1
123	647 99 00		Gasket		1	1
125	396 70 00		Puller screw compl. M16X265 10.9		1	1
125	438 58 00		Hexagon head screw M16X218 10.9	Optional	1	1
132	82 74 88		O-ring 174.3X5.7 NBR		1	1
132	82 74 86		O-ring 164.3X5.7 NBR		1	1
132	82 74 17		O-ring 124.3X5.7-NBR		1	1
133	309 46 00		Suction connection	Undrilled	1	1
133,1	309 48 00		Cleaning door		1	1
133,2	303 88 00		Gasket		1	1
133,3	81 41 81		Hexagon head screw M16X40-A4-70		4	4
133	309 46 06		Suction connection	LT Drilled according to : EN 1092-2 tab. 8 ANSI B16.1-89; tab.5 DN 200	1	1

Pos. No	Part. No	Type	Denomination	Qty/Version	
				161	191
133,1	309 48 00		Cleaning door	1	1
133,2	303 88 00		Gasket	1	1
133,3	81 41 81		Hexagon head screw M16X40-A4-70	4	4
133	309 46 07		Suction connection LT Drilled according to : EN 1092-2 tab. 9 DN 200	1	1
133,1	309 48 00		Cleaning door	1	1
133,2	303 88 00		Gasket	1	1
133,3	81 41 81		Hexagon head screw M16X40-A4-70	4	4
133	303 85 00		Suction connection STATIONARY Undrilled MT	1	1
133,1	303 87 00		Cleaning door	1	1
133,2	303 88 00		Gasket	1	1
133,3	81 41 81		Hexagon head screw M16X40-A4-70	4	4
133	303 85 06		Suction connection STATIONARY MT Drilled according to : EN 1092-2 tab. 9 ANSI B16.1-89; tab.5 DN 150	1	1
133,1	303 87 00		Cleaning door	1	1
133,2	303 88 00		Gasket	1	1
133,3	81 41 81		Hexagon head screw M16X40-A4-70	4	4
133	303 72 00		Suction connection STATIONARY Undrilled HT SH	1	1
133,1	81 49 06		Hexagon head screw M12X30-A4-70	4	4
133,2	303 76 00		Cleaning door	1	1
133,3	303 77 00		Gasket	1	1
133	303 72 01		Suction connection STATIONARY HT SH Drilled according to : EN 1092-2 tab. 9 DN 100	1	1
133,1	81 49 06		Hexagon head screw M12X30-A4-70	4	4
133,2	303 76 00		Cleaning door	1	1
133,3	303 77 00		Gasket	1	1
133	303 72 05		Suction connection SH HT Drilled according to : ANSI B16.1-89; tab.5 DN 100	1	1
133,1	81 49 06		Hexagon head screw M12X30-A4-70	4	4
133,2	303 76 00		Cleaning door	1	1
133,3	303 77 00		Gasket	1	1
134	554 30 15		Starter START 351-400-B-532-14	1	
135	80 14 41		Gasket SH	1	1
			LT		
			MT		
135	80 14 41		Gasket SH	2	2
			LT		
			MT		
136	80 14 39		Plug SH	1	1
			LT		
			MT		
136	80 14 39		Plug SH	2	2
			LT		
			MT		
162	93 00 77		Shrink hose ID=6.4 MM	*	*
169	667 40 00		Sticker	2	2

Pos. No	Part. No	Type	Denomination	Qty/Version	
				161	191
215	82 40 61		Plain washer 24.5X35X2-A2-70	1	1
215	82 40 82		Plain washer 34.5X52X2-A2-70	4	4
216	84 17 91		Seal sleeve (12)-14 MM FPM	1	1
216	84 17 93		Seal sleeve (16)-18 MM NBR	1	1
216	84 18 02		Seal sleeve (20)-23 MM NBR	2	2
216	84 18 03		Seal sleeve (23)-26 MM NBR	2	2
216	84 17 92		Seal sleeve (14)-16 MM NBR	1	1
216	84 17 94		Seal sleeve (18)-20 MM NBR	1	1
217	678 58 14		Cable clip 12-(14) MM	1	1
217	678 58 18		Cable clip 16-(18) MM	1	1
217	678 58 16		Cable clip 14-(16) MM	1	1
217	678 58 20		Cable clip 18-(20) MM	1	1
218	597 98 02		Sleeve	1	1
229	82 70 86		Cap 6X16 MM PVC	1	1
230	83 44 23		Closed-end splice 4.0-9.0 (AWG 8)	2	2
230	83 42 62		Closed-end splice 0.33-0.82 (AWG 22-18)	2	2
231	94 03 33		Shrink hose ID=3.2 MM	*	*
231	94 03 34		Shrink hose ID=6.4 MM	*	*
232	397 81 00		Gland screw Pr 37	1	1
232	642 17 00		Entrance flange (20)-32 MM	1	1
233	83 03 48		Hex.socket hd screw M12X40-A4-70	2	2
234	82 17 61		Cutting screw TAPTITE-M6X12	3	3
235	83 43 58		Cable lug UL/CSA 1.04-2.62 MM2 M6	1	1
235	83 42 96		Cable lug 2.5-6 MM2 M6	1	1
235	83 43 48		Cable lug CSA 10 MM2 M6	1	1
235	83 43 62		Cable lug UL/CSA 0.50-1.65 MM2 M6	1	1
236	83 44 23		Closed-end splice 4.0-9.0 (AWG 8)	1	1
236	83 42 65		Terminal block 600V/20A UL	2	2
236	83 42 65		Terminal block 600V/20A UL	3	3
236	83 42 65		Terminal block 600V/20A UL	1	
236	83 42 67		Terminal block 600V/20A UL	2	
236	83 44 24		Closed-end splice 3-6 (AWG 12-10)	2	2
237	82 74 63		O-ring 49.5X3 NBR	1	1
238	83 53 21		Terminal clamp SAK6/35 038056 EL-AUTOM	6	6
238	83 53 30		Terminal clamp SAK10/35 EL-AUTM	6	
238	83 53 30		Terminal clamp SAK10/35 EL-AUTM		6
239	83 53 22		End plate APPA - 11796	1	1
240	83 53 31		End support 35X15	2	2
241	443 68 00		Rail 35X15	1	1
242	722 00 00		Marking plate 5-GW (U1,V1,W1,W2,U2,V1)	2	

Pos. No	Part. No	Type	Denomination	Qty/Version	
				161	191
242	722 00 00		Marking plate 5-GW (U1,V1,W1,W2,U2,V1)		2
243	471 77 01		Marking strip 5-GW (U1,V1,W1,W2,U2,V1)	2	2
250	82 17 64		Cutting screw TAPTITE-M6X20	4	4
350	799 11 00		Cable entry kit	1	1
350	799 56 00		Cable entry kit	1	1
800	80 32 33		O-ring kits 3127.090,170,180,890 <40 GR NOT FOR: D,F,ST	1	1
800	80 32 74		O-ring kits 3127.090/180F,D,SUP.HT <40 GR FOR D,F,ST NBR	1	1
900	601 89 09		Basic repair kit 3127.090,180 TUNGSTEN CARBIDE - TUNGSTEN CARBIDE. TUNGSTEN CARBIDE - TUNGSTEN CARBIDE.	1	1
900	601 89 10		Basic repair kit 3127.090,180 TUNGSTEN CARBIDE - TUNGSTEN CARBIDE. TUNGSTEN CARBIDE - TUNGSTEN CARBIDE.	1	1
900	693 19 00		Basic repair kit NBR D 35MM, WCCR/WCCR D35WCCR/AI203 ACTIVE	1	1
900	693 19 01		Basic repair kit NBR D 35MM, WCCR/WCCR D35WCCR/AI203 ACTIVE	1	1
900	693 19 02		Basic repair kit NBR D 35MM, SIC/SIC D35WCCR/AI203 ACTIVE	1	
900	693 19 03		Basic repair kit NBR D 35MM, SIC/SIC D35WCCR/AI203 ACTIVE	1	
900	693 19 06		Basic repair kit	1	1
900	693 19 07		Basic repair kit	1	1
901	90 17 52		Oil ISO VG 32	2	2
904	436 97 00		Mounting tool	1	1
912	82 73 90		O-ring 19.2X3 NBR	4	
912	82 74 78		O-ring 124.5X3.0-NBR	1	
912	82 72 95		O-ring 19.2X3 FPM	4	
912	82 95 60		O-ring 123X3 FPM	1	
912	82 73 90		O-ring 19.2X3 NBR		4
912	82 74 78		O-ring 124.5X3.0-NBR		1



ООО «Бауманс Груп» - официальный партнер фирмы Flygt в России.

Тел: +7 495 121 49 50

Эл. почта: info@baumgroup.ru

Сайт: www.baumgroup.ru